

BASIC TOOTH ANATOMY

Enamel 2mm

Great for chewing food, but softer than steel.

Dentin 2-3mm

Protects pulp and absorbs bite force.

Pulp

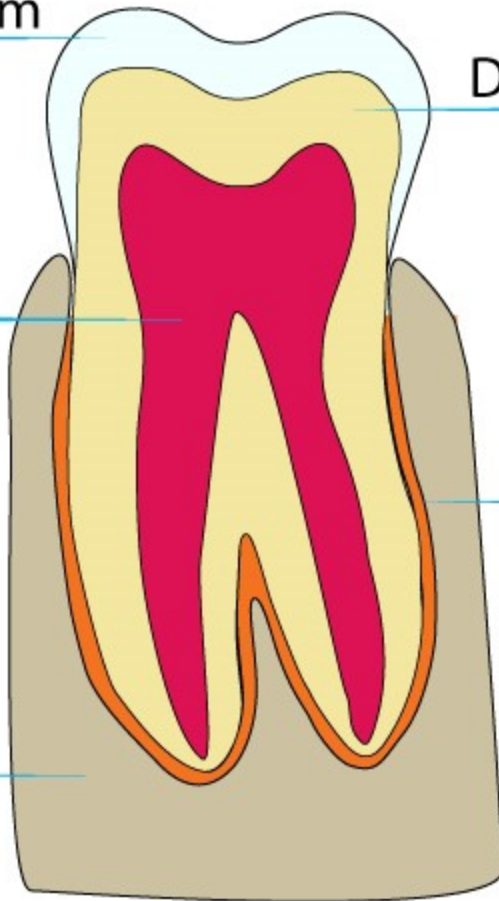
Contains nerves and blood vessels—keeps tooth alive.

Periodontal Ligament

Attaches tooth to bone and absorbs bite force.

Bone

Provides a stable platform to house teeth.



Easy
Gold
Crowns